

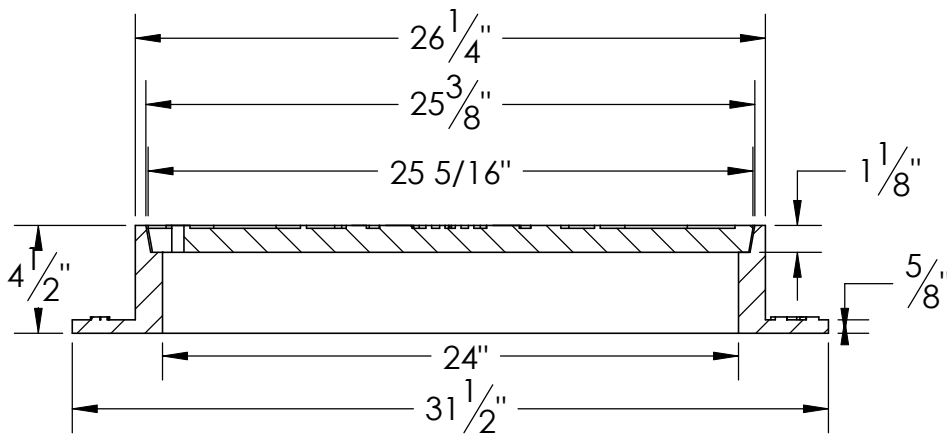
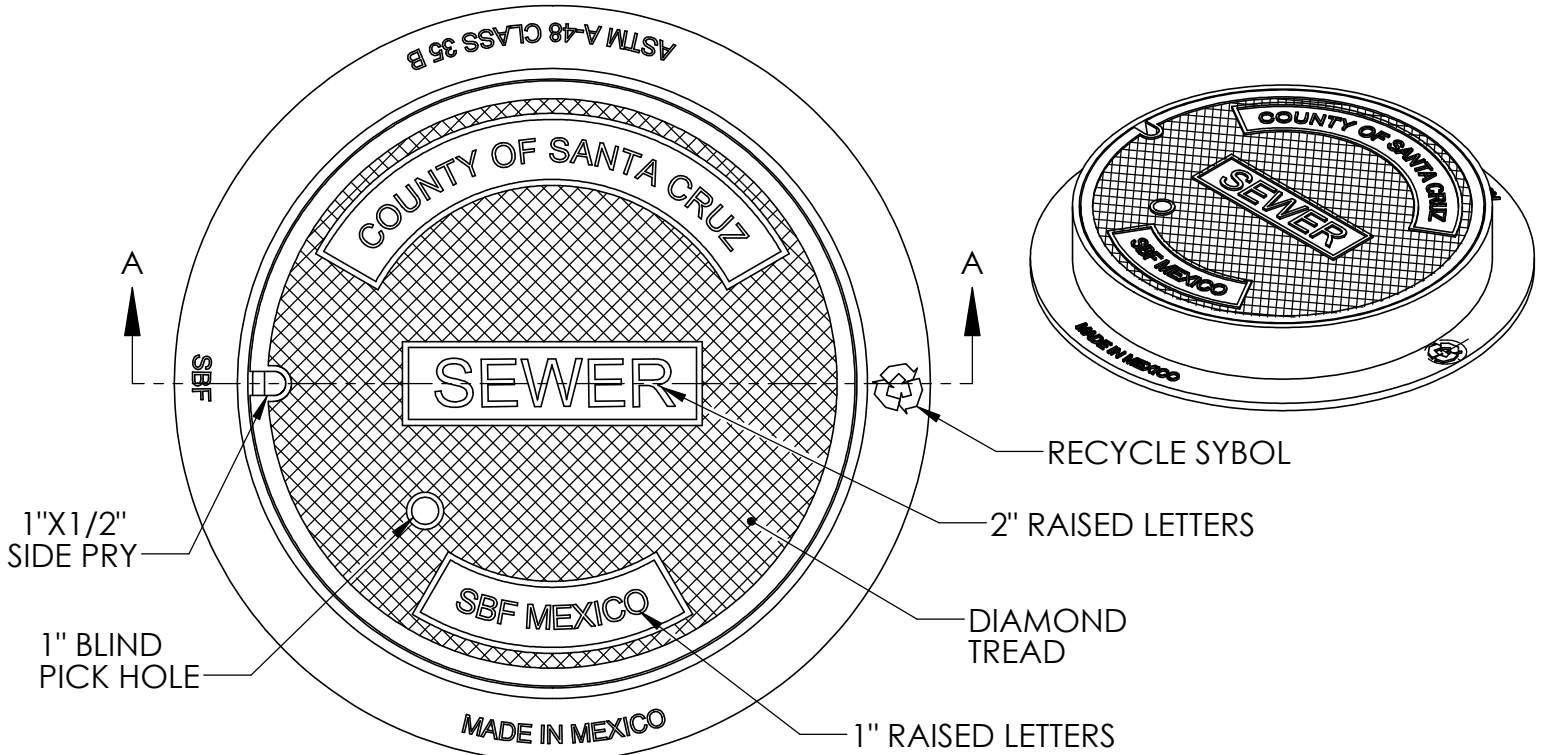


South Bay Foundry

9444 Abraham Way Santee, CA 92071 (619) 956-2780
 42 North Cluff Lodi, CA 95240 (209) 367-1940
 895 S. Inland Center Dr. San Bernardino, CA (909) 888-3334

MANHOLE FRAME & COVER

A 46



SECTION A-A
SCALE 1 : 8

SBF 1900 BPH

| Set Weight | |
|------------|---------|
| Frame | 140 Lbs |
| Cover | 130 Lbs |
| Total | 270 Lbs |

General Information

- All materials used in manufacturing shall conform to ASTM 48. Class 35B.
- Frame and cover bearing surfaces shall be machined to assure close, quiet fit.
- Castings shall be dipped in black bituminous paint.
- Frame and cover exceeds H-20 wheel loading.

| | |
|----------|--|
| Approved | |
| By: | |
| Title: | |
| Agency: | |
| Date: | |
| Comments | |
| | |
| | |
| | |