

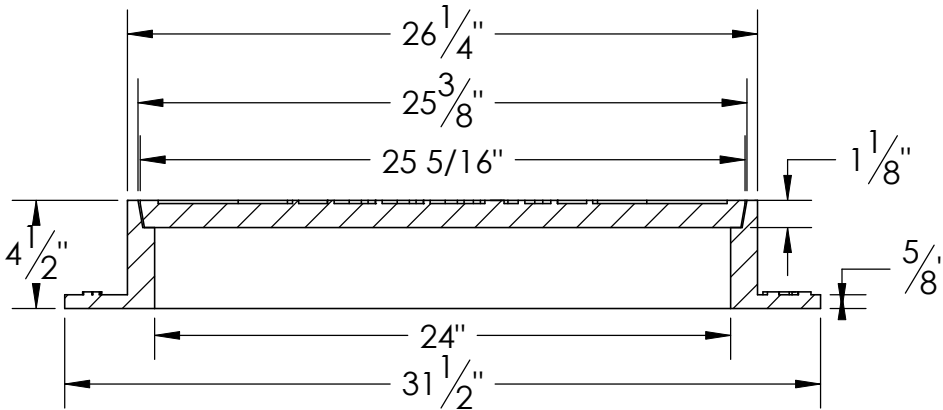
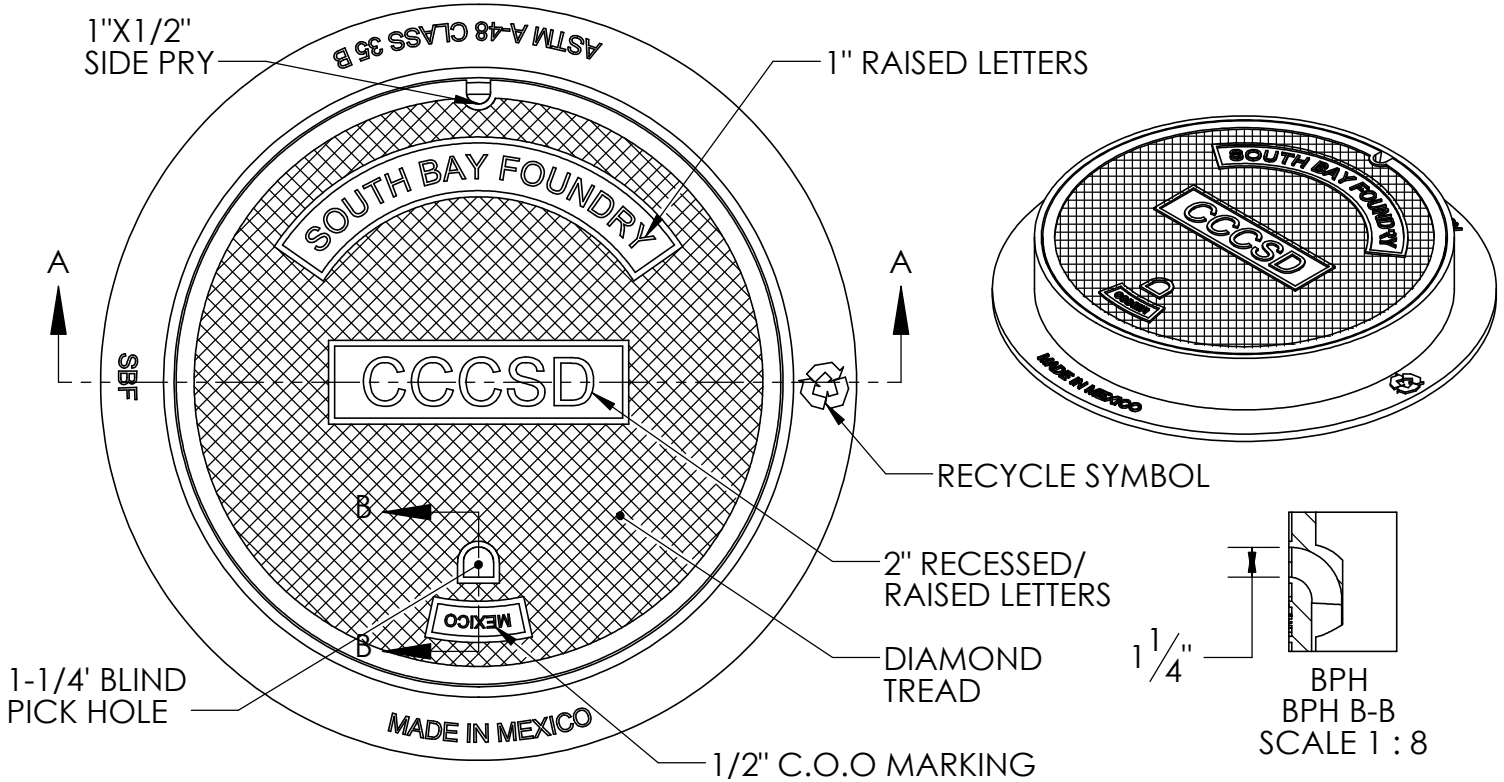


South Bay Foundry

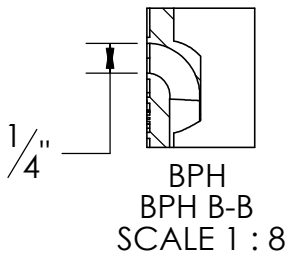
9444 Abraham Way Santee, CA 92071 (619) 956-2780
 42 North Cluff Lodi, CA 95240 (209) 367-1940
 895 S. Inland Center Dr. San Bernardino, CA (909) 888-3334

MANHOLE FRAME & COVER

A 46



SECTION A-A
SCALE 1 : 8



SBF 1900 BPH

Set Weight	
Frame	140 Lbs
Cover	130 Lbs
Total	270 Lbs

General Information

- All materials used in manufacturing shall conform to ASTM 48. Class 35B.
- Frame and cover bearing surfaces shall be machined to assure close, quiet fit.
- Castings shall be dipped in black bituminous paint.
- Frame and cover exceeds H-20 wheel loading.

Approved	
By:	
Title:	
Agency:	
Date:	
Comments	