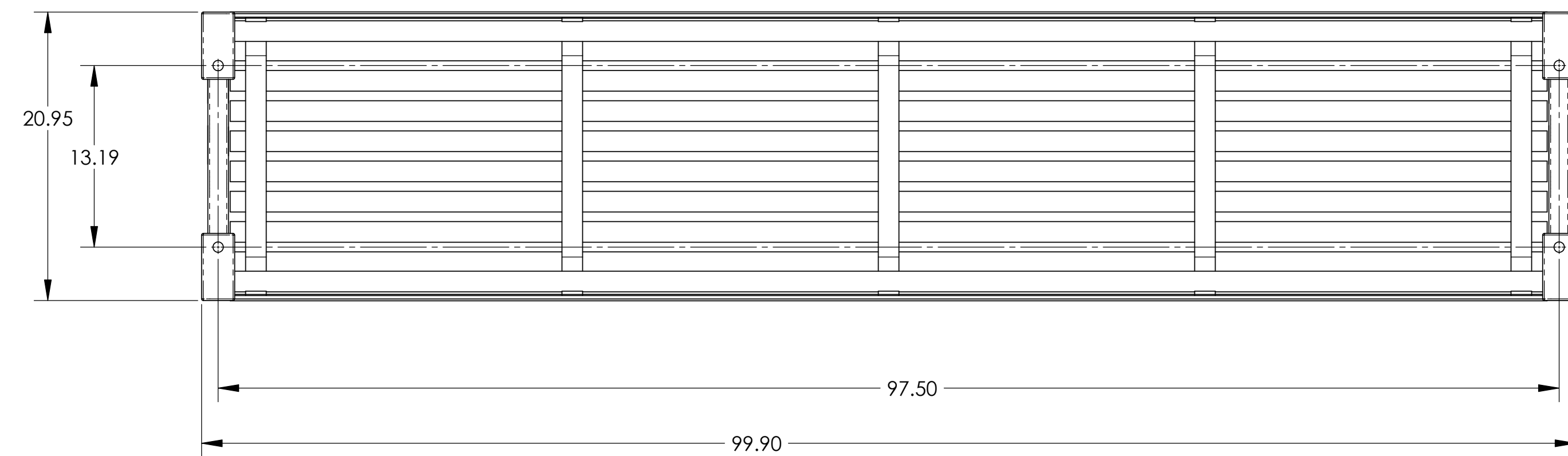
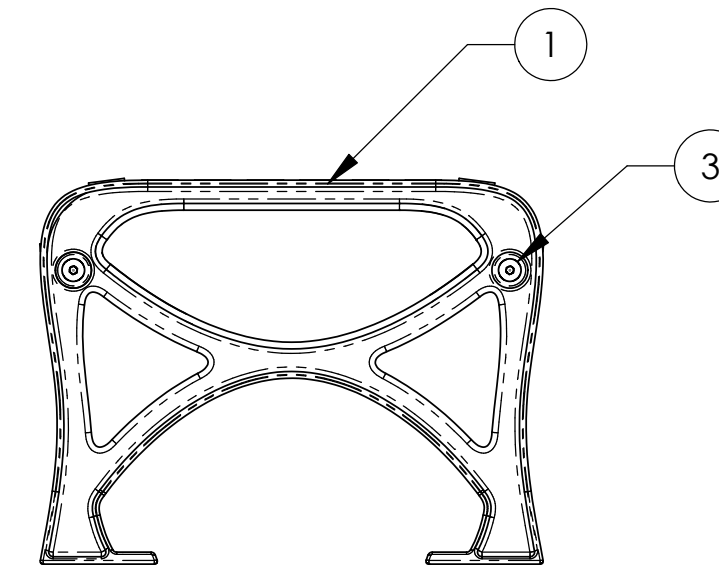
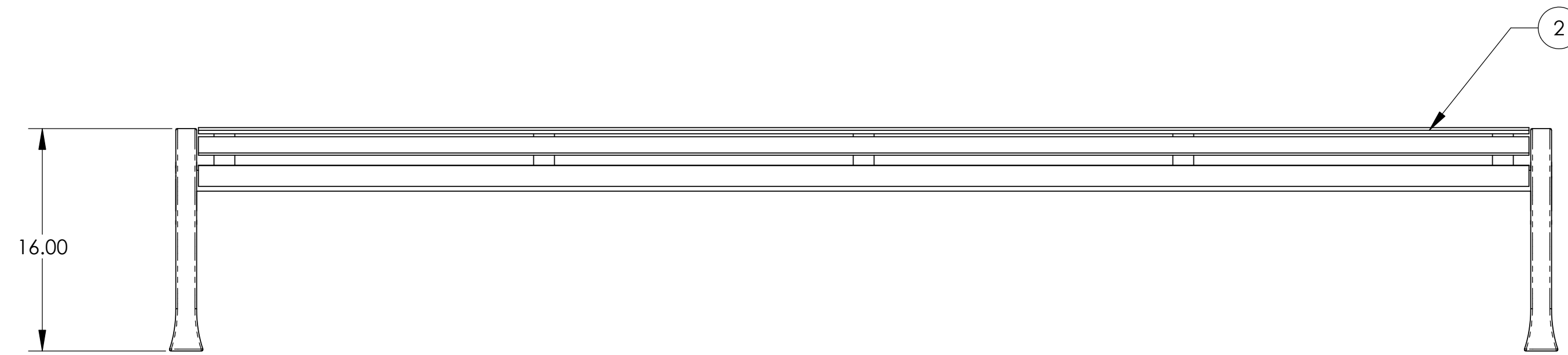
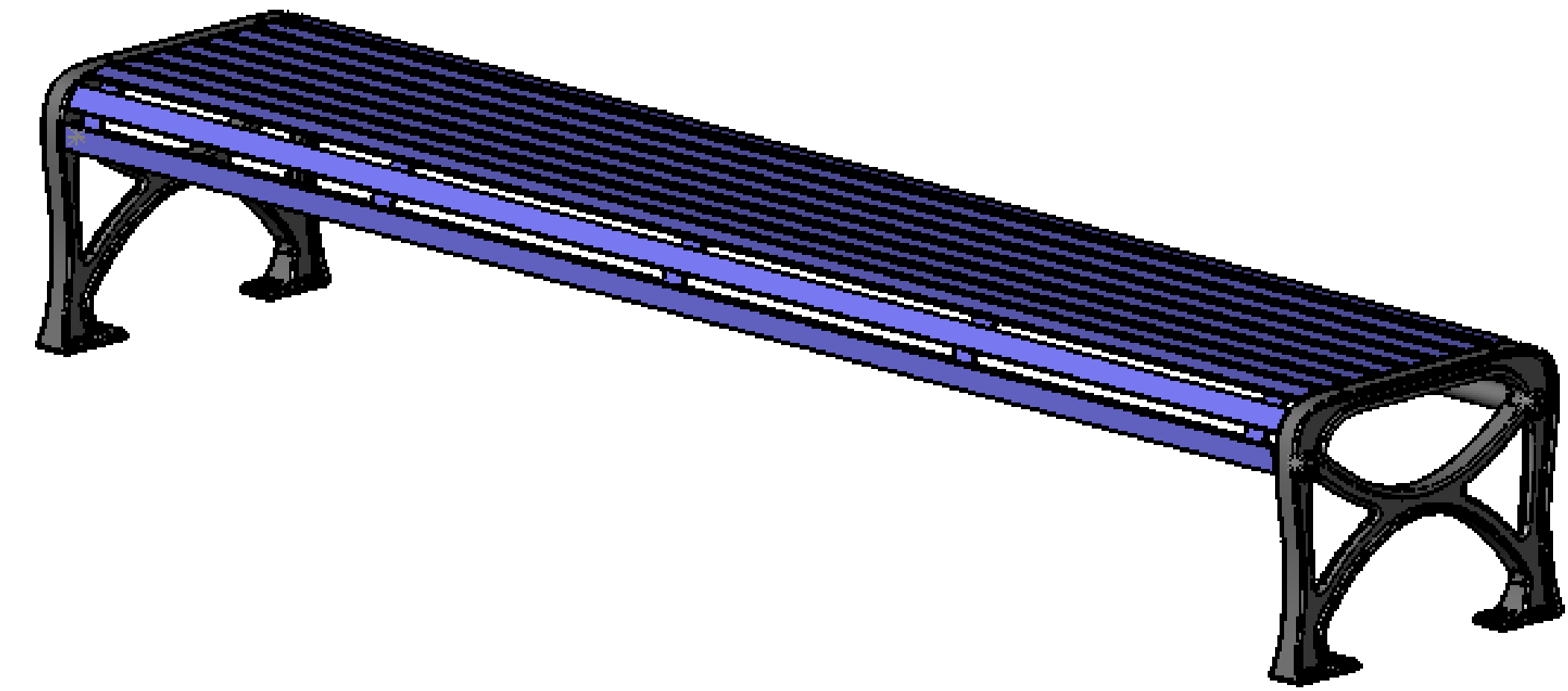
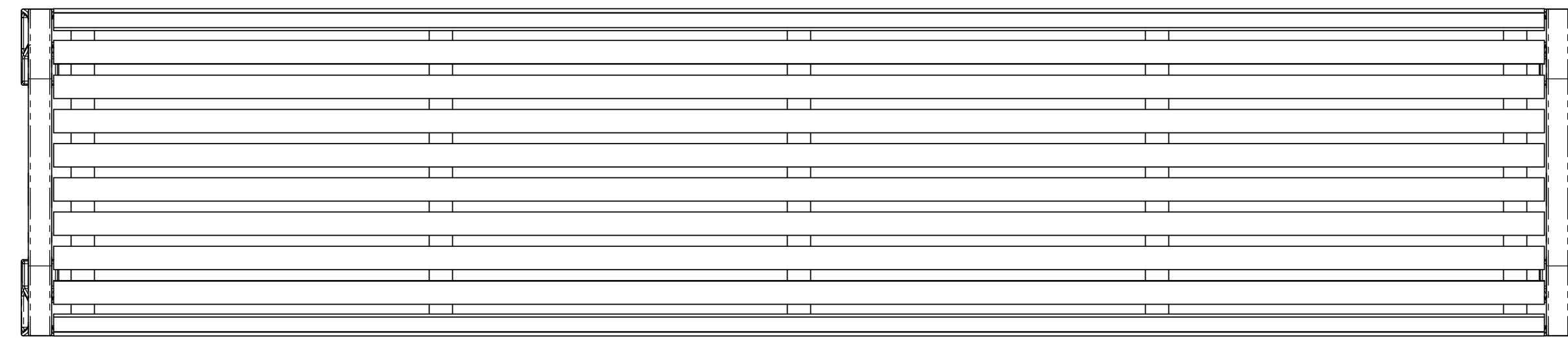
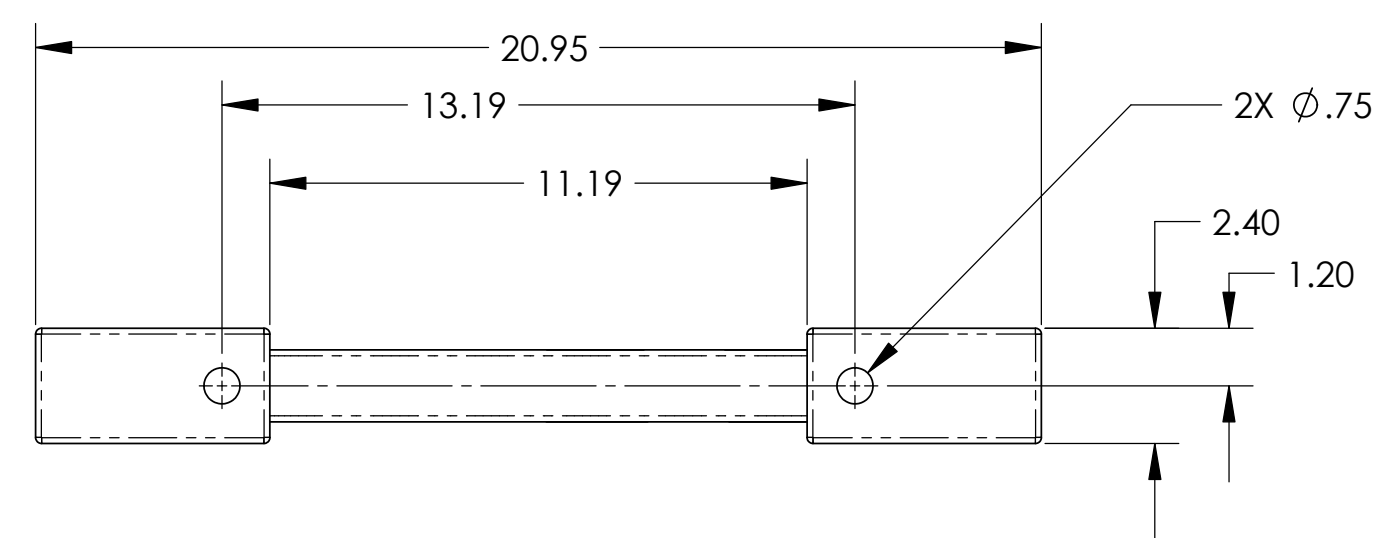
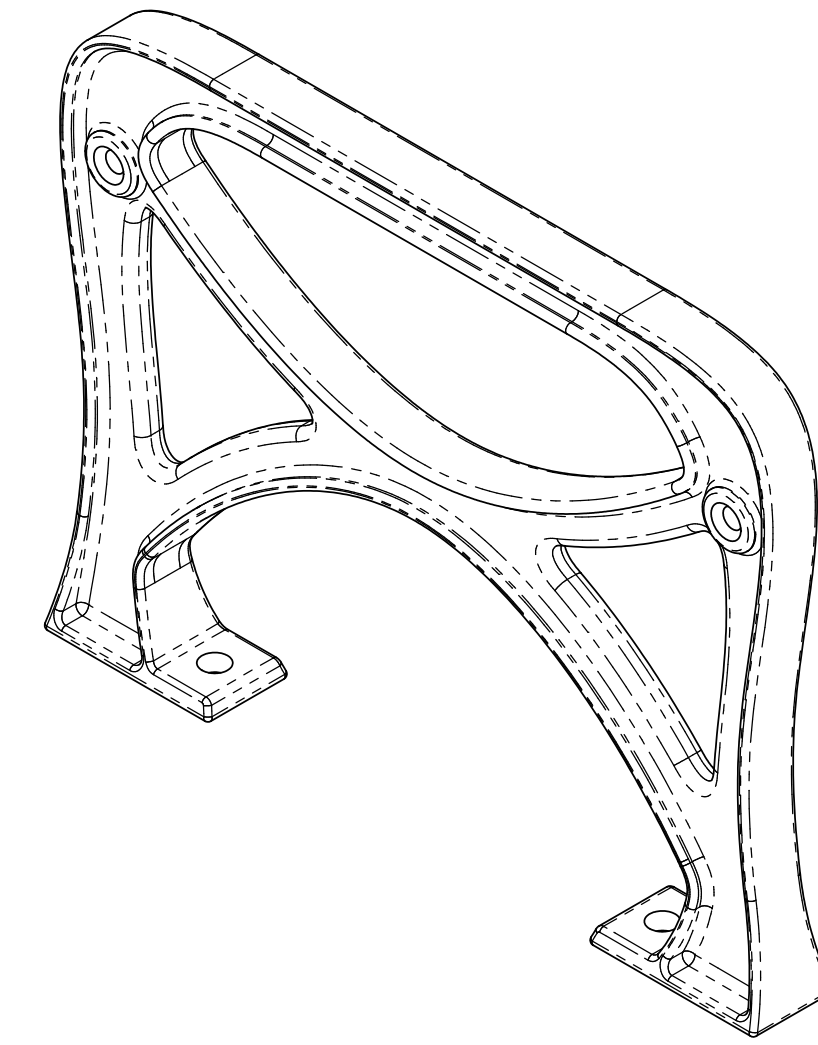
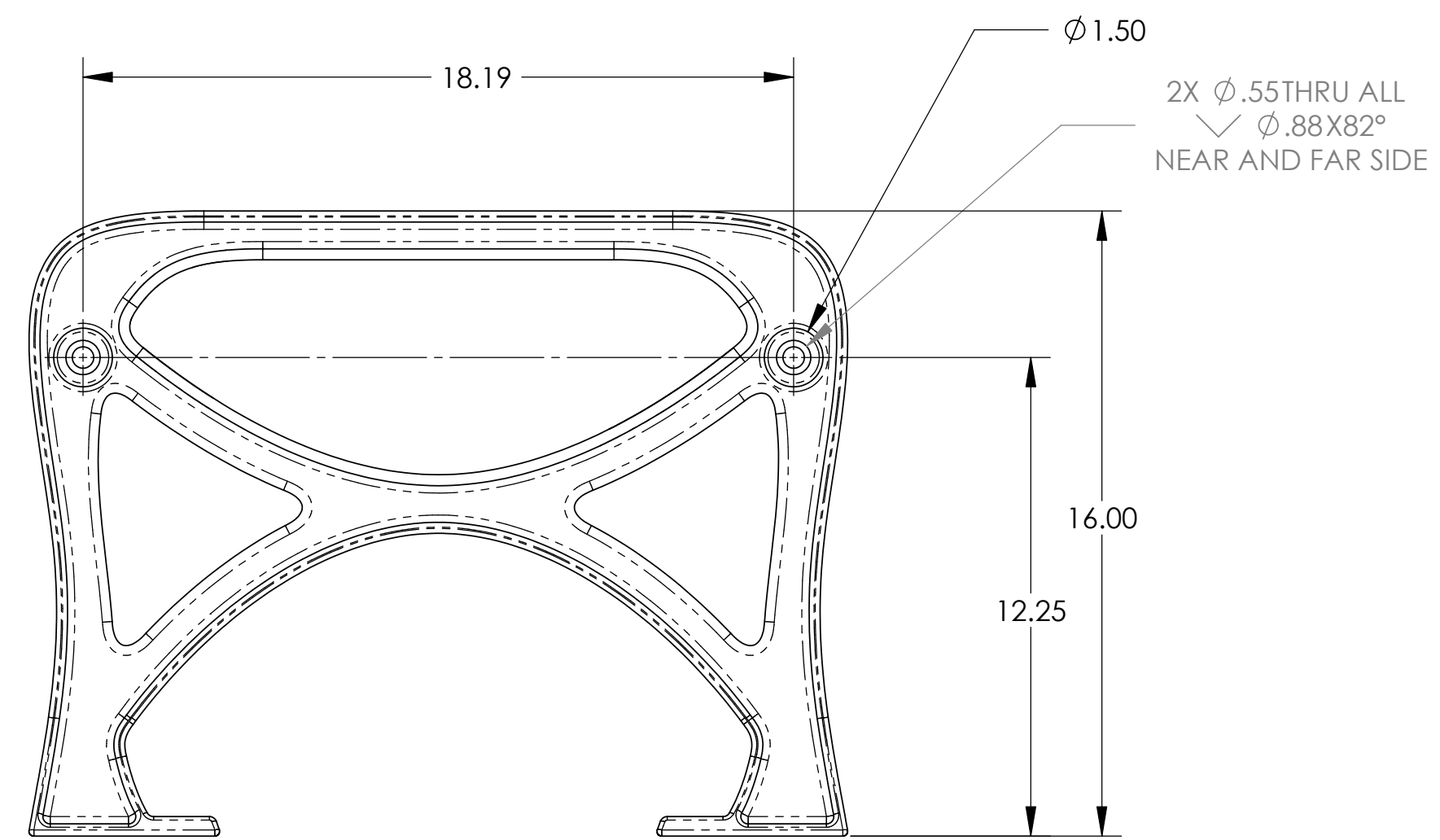
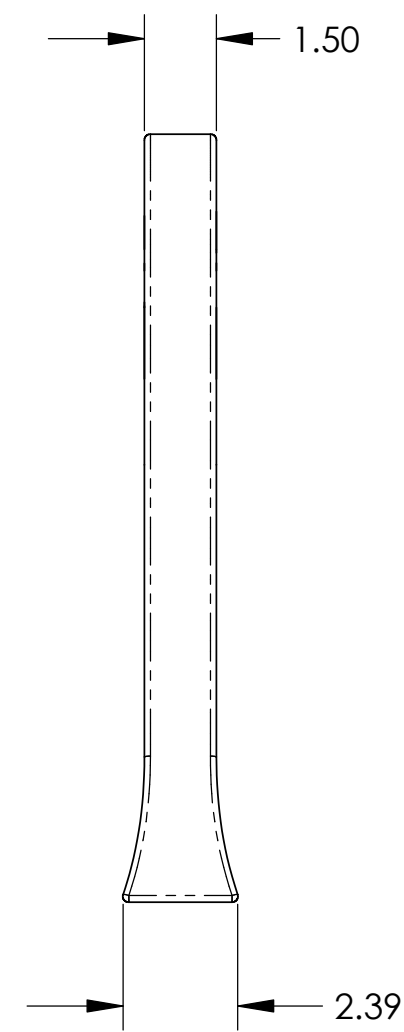


REVISIONS			
REV	DESCRIPTION	DRAWN / DATE	APVD / DATE
-	INITIAL RELEASE	SLUDER 4/5/2005	
A	CHG ENDS TO MATCH BACK TYPE BENCH, ADDED 1 STILE TO BENCH SEAT (NOW A TOTAL OF 5 STILES)	SLUDER 4/8/2005	

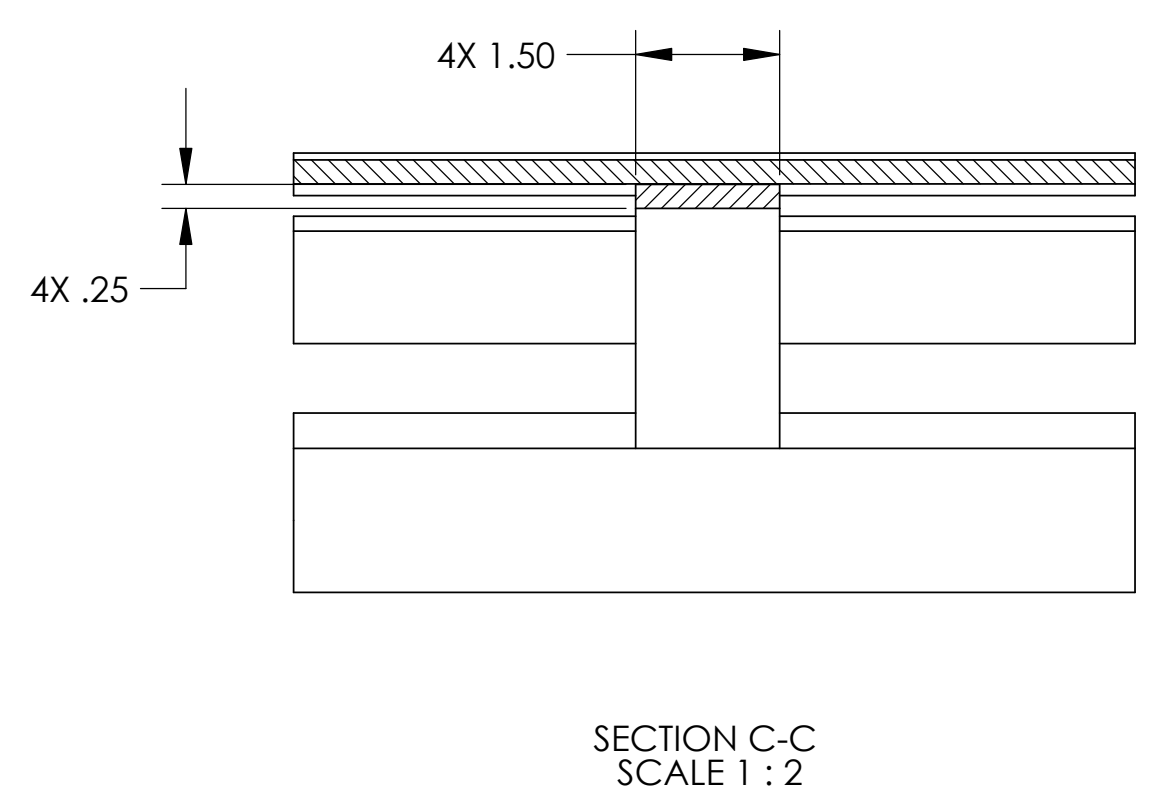
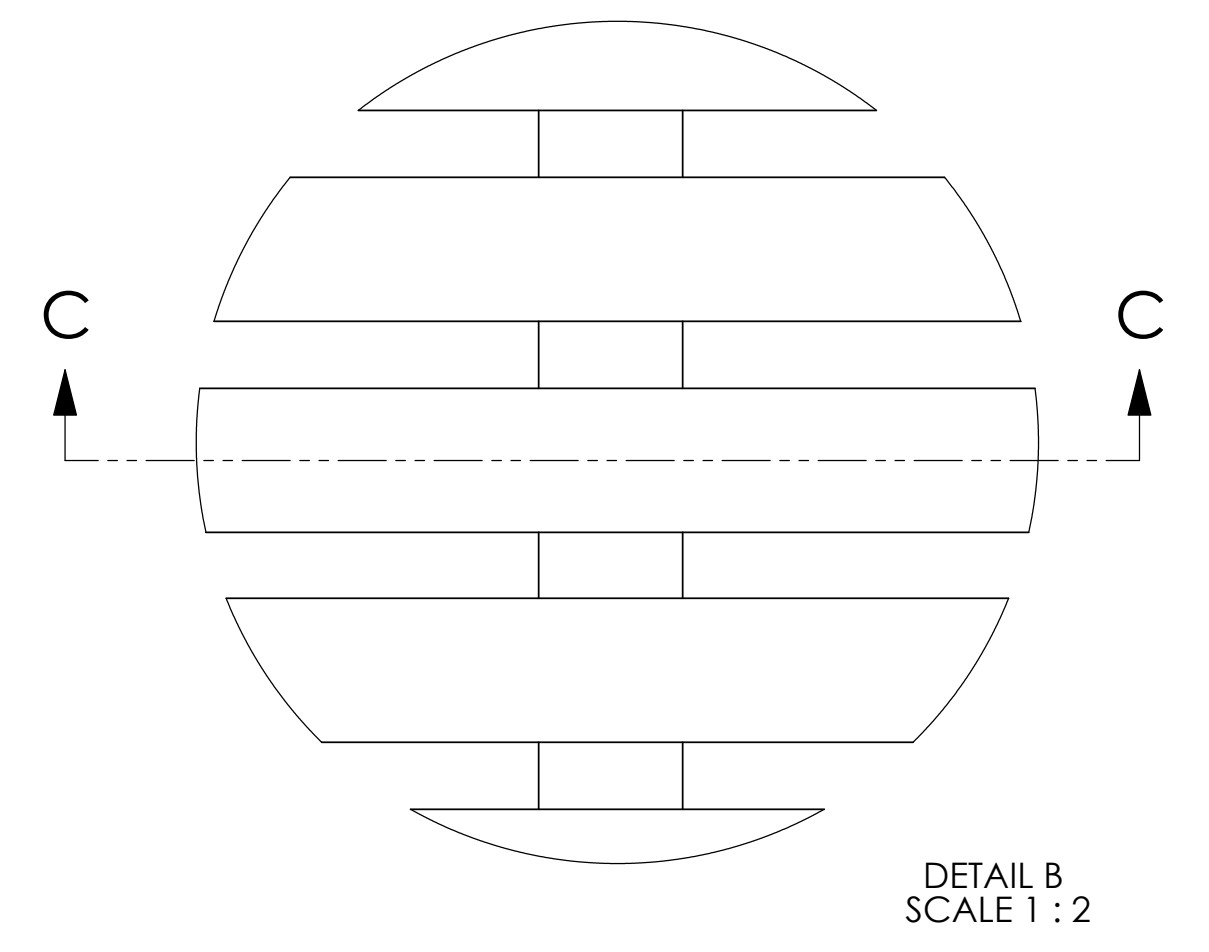
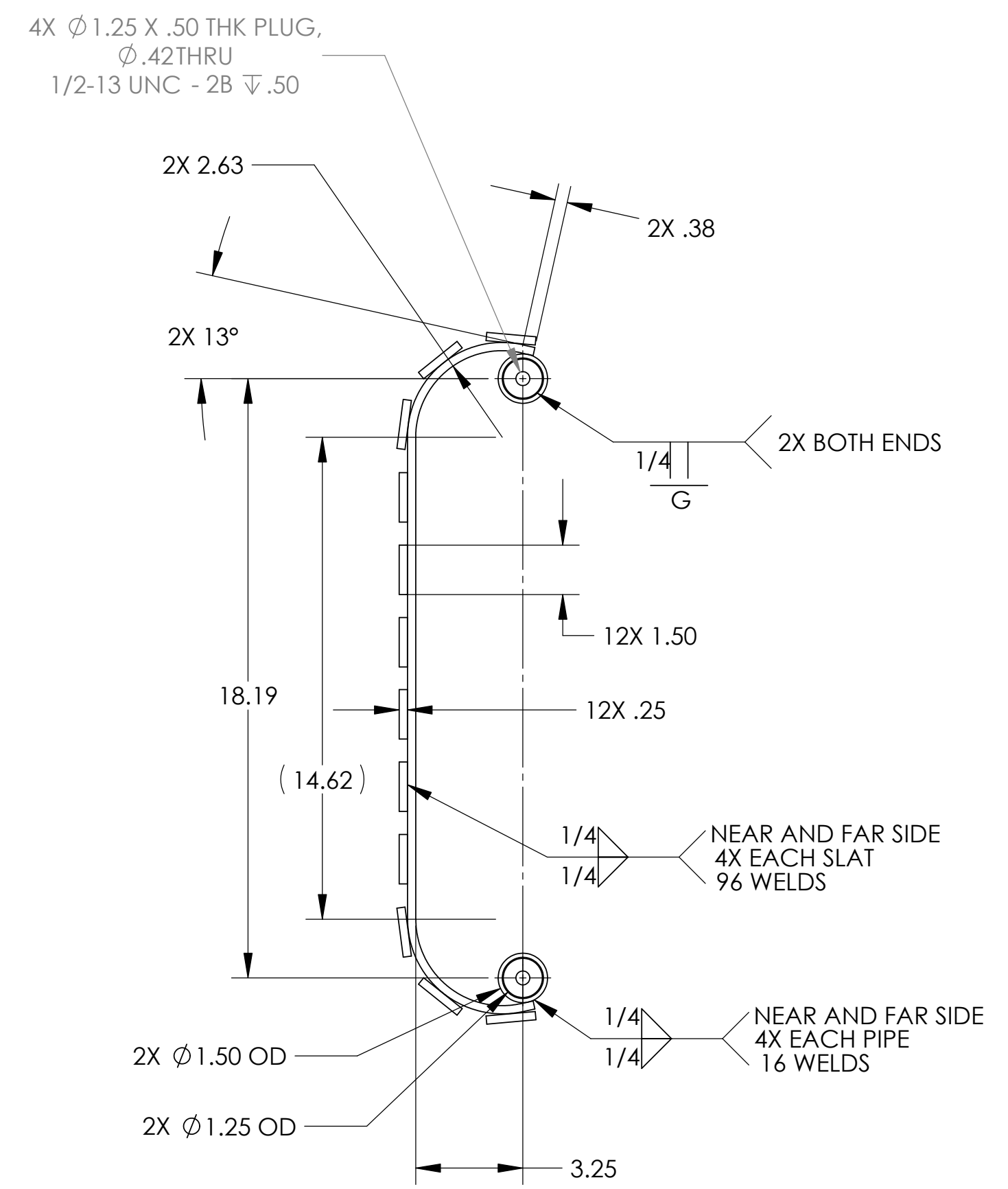
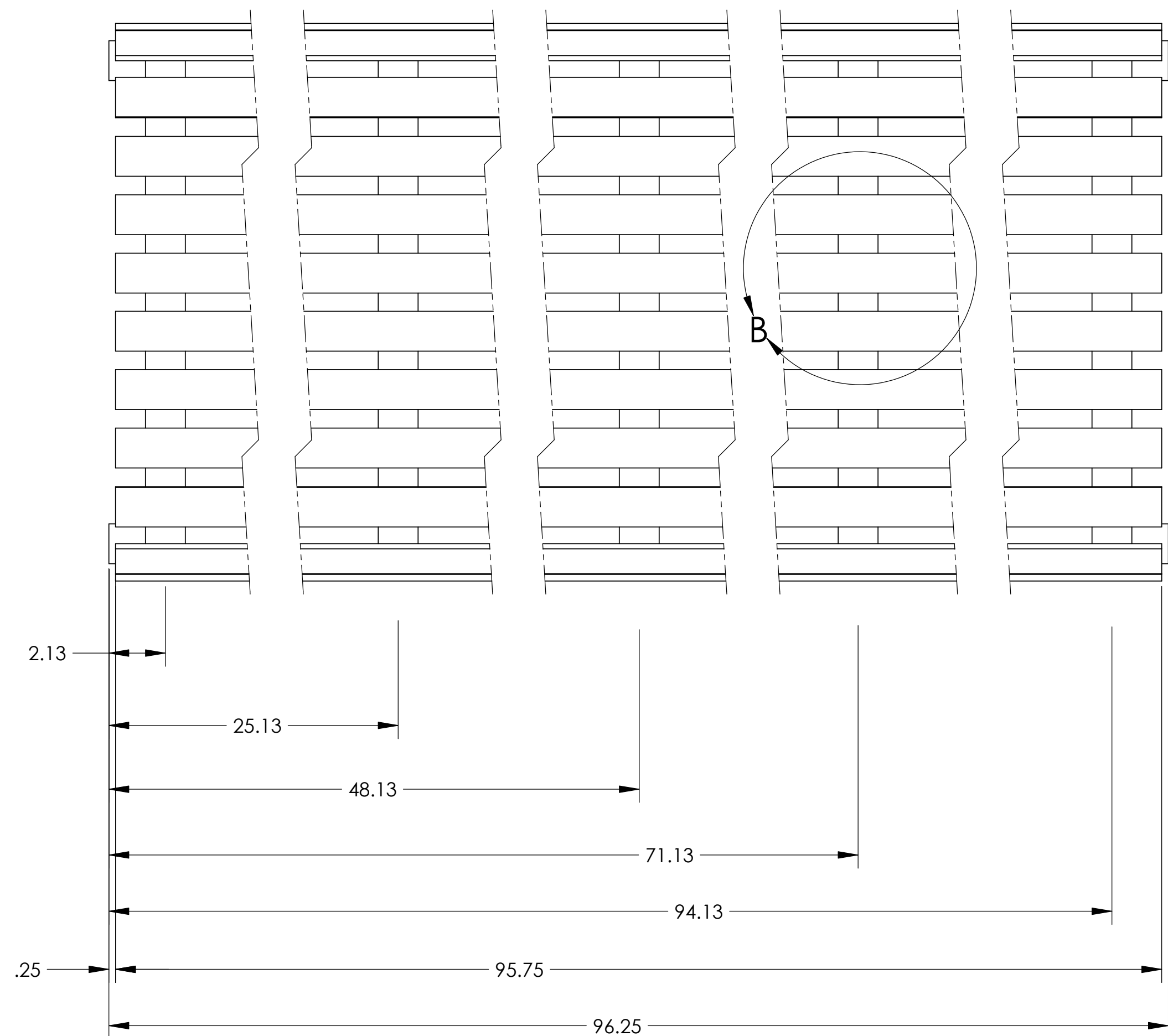


BILL OF MATERIALS			
ITEM NO.	QTY.	PART NUMBER	DESCRIPTION
1	2	PB400-NBS	PB SERIES CST DI SIDE METALIZED
2	1	PB400-NB96	PB SERIES NO BACK FABRICATED SEAT HDG
3	4	NA	1/2-13 NC X 1.50 L FLATHEAD CAP SCREW (HEX SOCKET)

UNLESS OTHERWISE SPECIFIED DIMENSIONS ARE IN INCHES TOLERANCES ARE: FRACTION DECIMAL ANGLE .XX = ±.03 .XX = ±1° .XXX = ±.005 XXXX = ±.0005	CONTRACT NUMBER		South Bay Foundry	
	DRAWN	SLUDER 4/5/05	NO BACK PARK BENCH ASSEMBLY	
MATERIAL	APVD	SIZE	D	PART NO. PB400-96NB
FINISH	REL	SCALE	1:8	REV A
				SHEET 1 OF 3



South Bay Foundry			
PB 400 SERIES NO BACK CST DI SIDE METALIZED			
SIZE	D	PART NO.	PB400-NBS
		REV	A
SCALE 1:4		SHEET 2 OF 3	



South Bay Foundry			
PB 400 SERIES NO BACK FABRICATED SEAT HDG			
SIZE	D	PART NO.	PB400-NB96
		REV	A
SCALE 1:4		SHEET 3 OF 3	